



SUMMER PROGRAM 2022

Summer at HMS is always a blast!

Each week features a different summer camp theme (See pages 4-5 for a list of weekly themes!) Our mornings are similar to a regular Montessori day - with circle time and themed lessons - and the afternoons are dedicated to more traditional summer activities, outdoor time, water play, etc.

All classrooms are run by HMS teachers with support from HMS assistants and support staff.

Program Hours: 9:00AM - 3:00PM
Extended Care Hours: 7:00AM - 9:00AM & 3:00PM - 5:00PM

COST: \$250 PER WEEK / PER CHILD

**EXTENDED CARE: \$65 FLAT RATE
PER WEEK / PER CHILD**

Please reach out to Quinci Adams, Summer Program Director, at quinci@harbormontessori.org with any program questions.

DON'T MISS OUT!

REGISTRATION BEGINS MARCH 21 @ 5:00PM!

Current HMS families will have access to summer registration beginning on Monday, March 21, at 5pm. The link to register will be emailed to families and will also be available on our website.

Spots fill up fast, so make sure to register on time!

Early Childhood:

For our friends 3 years old - Kindergarten
Limited to 40 students per week!

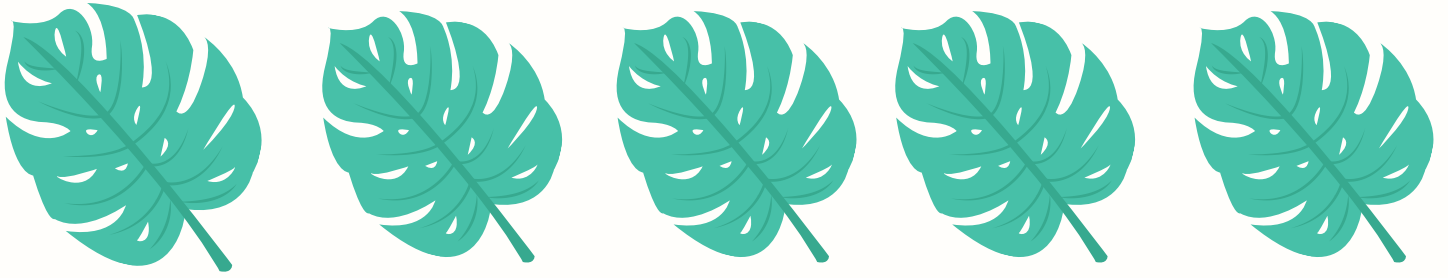
Elementary:

For our friends entering 1st - 6th Grade
Limited to 20 students per week!

Be sure to register your child according to the grade they will be entering for the 2022-23 school year.

Registration opens Monday, March 28 for alumni students & non-HMS siblings
(dependent on availability).

Registration opens Wednesday, March 30 to the public
(dependent on availability).



Billing Info

You will have the option to pay for your selected Summer Program sessions online at the time of registration, or pay by June 1 with cash, check, or credit/debit card.

Your account must be in good standing to register.

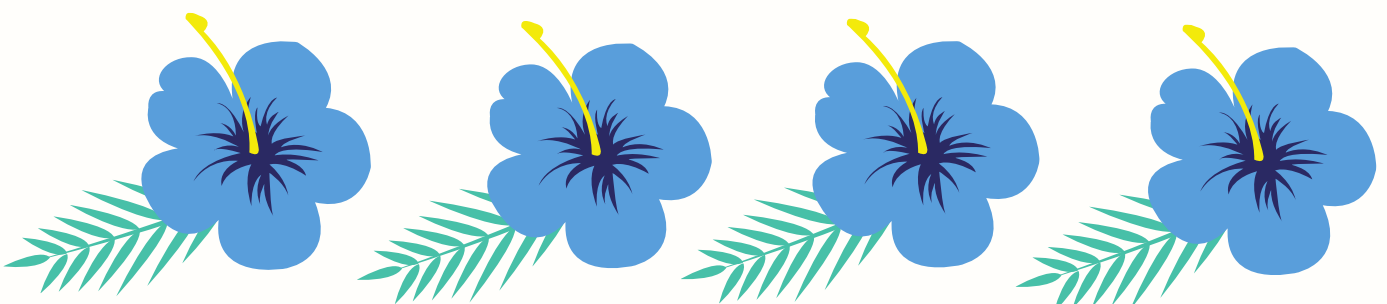
Payment for all Summer Program sessions will be due on June 1.

Cancellation Policy:

If you need to cancel any summer sessions after registration, you may do so at no charge until June 1, 2022. After that date, any sessions canceled one week or more in advance will incur a **cancellation penalty of \$100**. Prepaid weeks will be refunded to you minus the \$100 penalty. *Note: If a session is canceled less than one week before the first day of that session, you will be charged in full for that session.*

Weekly programs will be filled on a first-come, first-served basis. If and when capacity is reached for a session, you may register for the waitlist for that week. If there is a cancellation for a session you are waitlisted for, you will be notified of availability and offered registration for that session. You will be billed upon accepting registration.

Please reach out to Adena Himmelstein (adena@harbormontessori.org) with any billing questions.



Weekly Themes!



Week One (June 27-July 1)

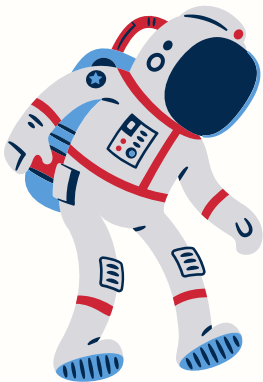
At the Big Top

with Miss Maria (Maple), Miss Kelsey (Spruce),
and Mrs. Peacock (Elementary)

Week Two (July 5-8)

A Pirate's Life For Me

with Mrs. Bree (Maple), Miss Kelsey (Spruce), and Mrs.
Peacock (Elementary)



Week Three (July 11-15)

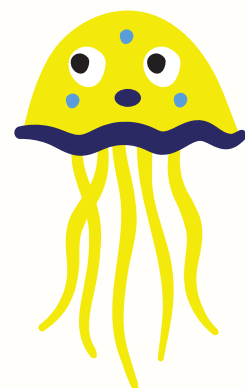
Space Explorers

with Mrs. Bree (Maple), Miss Kelsey (Spruce),
and TBD (Elementary)

Week Four (July 18-22)

Under the Sea

with Mrs. Bree (Maple), Miss Maria (Spruce)
and Mrs. P (Elementary)





Week Five (July 25-29)

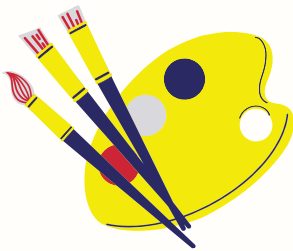
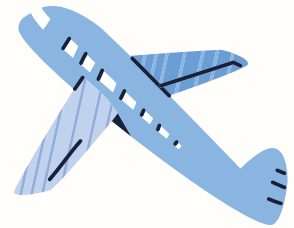
Mad Scientists

with Miss Casey (Maple), Miss Grace (Spruce)
and Mrs. P (Elementary)

Week Six (Aug 1-5)

Around the World in 5 Days

with Mrs. Purdue (Maple), Mrs. Megee (Spruce)
and Mrs. Leichsenring (Elementary)



Week Seven (Aug 8-12)

Creative Campers

with Miss Casey (Maple), Mrs. Megee (Spruce)
and Mrs. Purdue (Elementary)

Week Eight (Aug 15-19)

Wands & Wizards

with Miss Alene (Maple), Mrs. Megee (Spruce)
and Miss Nazy (Elementary)



Week Nine (Aug 22-26)

Chill Week

with Miss Maria (Maple), Miss Cheyenne (Spruce)
and Miss Nazy (Elementary)