



SUMMER PROGRAM 2023

Summer at HMS is always a blast!

The first 5 weeks and last 5 weeks features a different summer camp theme (See pages 4-5 for this Summers themes!) Our mornings are similar to a regular Montessori day - with circle time and themed lessons - and the afternoons are dedicated to more traditional summer activities, outdoor time, water play, etc.

All classrooms are run by HMS teachers with support from HMS assistants and support staff.

Program Hours: 9:00AM – 3:00PM
Extended Care Hours: 7:00AM – 8:30AM & 3:30PM – 5:30PM

COST: \$275 PER WEEK / PER CHILD

**EXTENDED CARE: \$70 FLAT RATE
PER WEEK / PER CHILD**

Please reach out to Miss Rachel, Summer Program Director, at Rachel@harbormontessori.org with any program questions.

DON'T MISS OUT!

REGISTRATION BEGINS APRIL 2ND @12:00PM!

Current HMS families will have access to summer registration beginning on Sunday, April 2nd, at 12pm. The link to register will be emailed to families with the weekly and on April 12th available on our website.

Spots fill up fast, so make sure to register on time!

Early Childhood:

For our friends 3 years old – Kindergarten
Limited to 40 students per week!

Elementary:

For our friends entering 1st – 6th Grade
Limited to 20 students per week!

Be sure to register your child according to the grade they will be entering for the 2023-24 school year.

Registration opens Monday, April 10th for alumni students & non-HMS siblings.
(dependent on availability).

Registration opens Wednesday, April 12th to the public.
(dependent on availability).



Billing Info

You will have the option to pay to pre-pay for your selected Summer Program sessions through brightwheel at the time of registration, or pay by June 1 with cash, check, or credit/debit card.

Your account must be in good standing to register. Registration after June 1st are due at the time of registration.

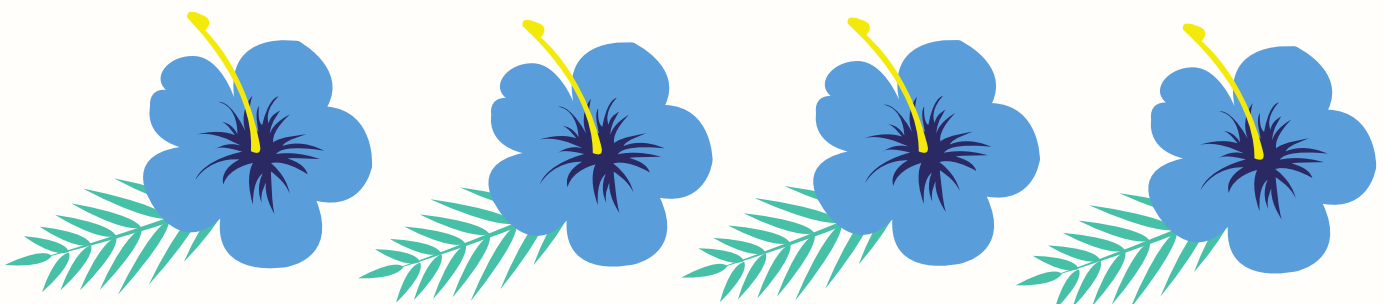
Payment for all Summer Program sessions will be due on June 1.

Cancellation Policy:

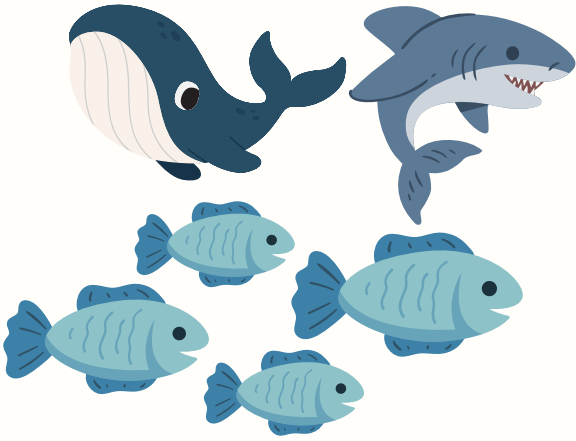
If you need to cancel any summer sessions after registration, you may do so at no charge until June 1, 2022. After that date, any sessions canceled one week or more in advance will incur a **cancellation penalty of \$100**. Prepaid weeks will be refunded to you minus the \$100 penalty. *Note: If a session is canceled less than one week before the first day of that session, you will be charged in full for that session.*

Weekly programs will be filled on a first-come, first-served basis. If and when capacity is reached for a session, you may register for the waitlist for that week. If there is a cancellation for a session you are waitlisted for, you will be notified of availability and offered registration for that session. You will be billed upon accepting registration.

Please reach out to Adena Himmelstein (adena@harbormontessori.org) with any billing questions.



Planet Animal Week 1-5



Week One Early Childhood (June 20-23)

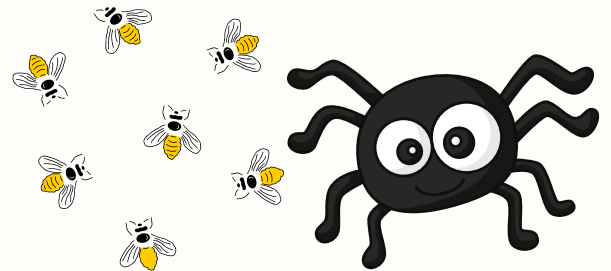
Whales & Sharks

with Miss Marisin (Maple), Miss Kelsey (Spruce)

Week One Elementary (June 20-23)

Bees & Spiders (Arachnids)

with Mrs. P



Week Two Early Childhood (June 26-30)

Fish

with Mrs. Bree (Maple), Miss Kelsey (Spruce)

Week Two Elementary (June 26-30)

Farm Animals

with Mrs. Peacock



Week Three Early Childhood (July 3-7))

Bee's & Other Insects

with Mrs. Bree (Maple), Miss Kelsey (Spruce)

Week Three Elementary (July 3-7)

Frogs/Turtles (Amphibians)

with Mrs. Peacock

Week Four Early Childhood (July 10-14)

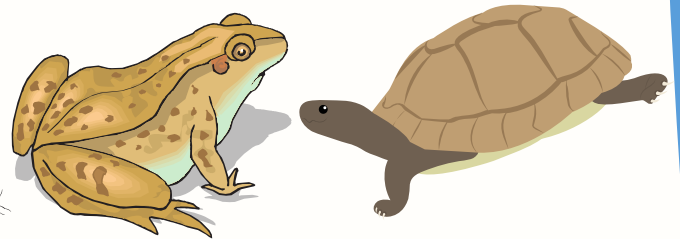
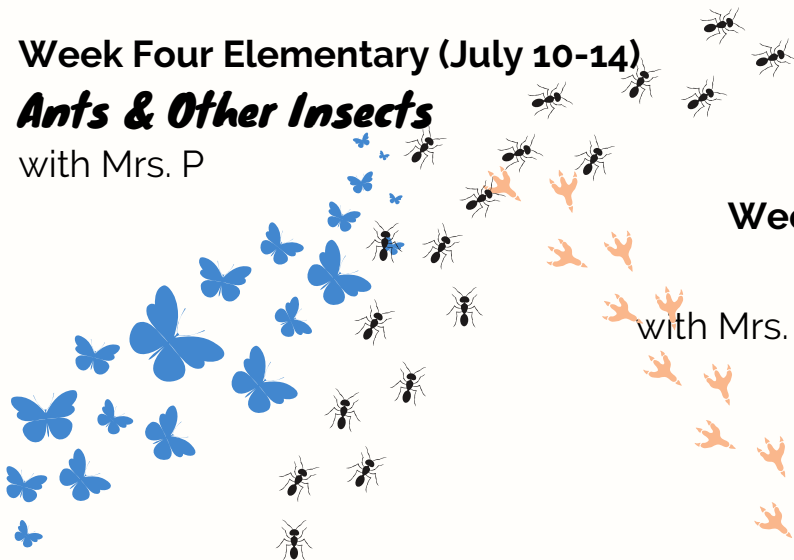
Spiders (Arachnids)

with Mrs. Bree (Maple), Mrs. Marisin (Spruce)

Week Four Elementary (July 10-14)

Ants & Other Insects

with Mrs. P



Week Five Early Childhood (July 17-21)

Butterflies

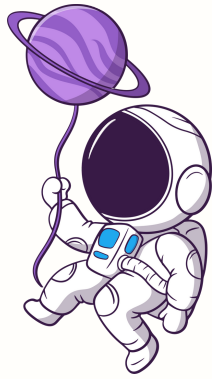
with Mrs. Marisin (Maple), Miss Grace (Spruce)

Week Five Elementary (July 17-21)

Animal Tracks

with Mrs. Bree

Out Of This World Week 6-10



Week Six Early Childhood (July 24-28)

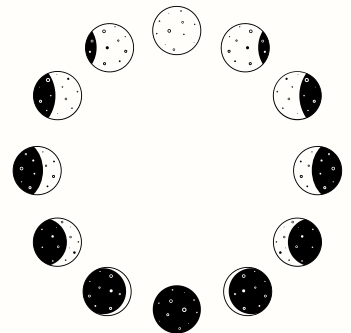
Astronauts

with Miss Heather (Maple), Miss Grace (Spruce)

Week Six Elementary (July 24-28)

Moon Phases

with Mrs. Bree



Week Seven Early Childhood (July 31-Aug 4)

Space Shuttles

with Miss Heather (Maple), Mrs. Purdue (Spruce)

Week Seven Elementary (July 31- Aug 4)

Planets

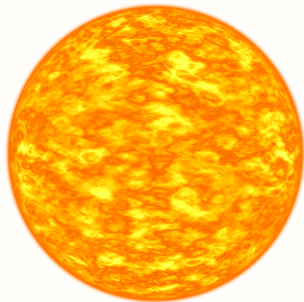
with Mrs. Nazzzy



Week Eight Early Childhood (Aug 7-11)

Sun

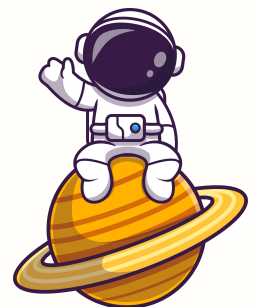
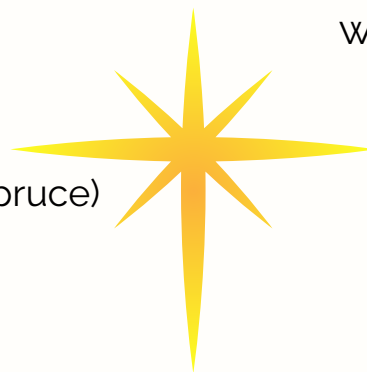
with Miss Cheyenne (Maple), Ms. Megee (Spruce)



Week Eight Elementary (Aug 7-11)

Astronauts

with Mrs. Nazzzy



Week Nine Early Childhood (Aug 14-18)

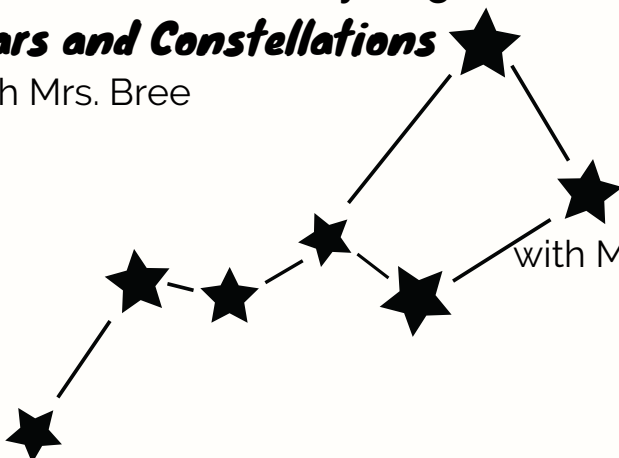
Moon

with Miss Cheyenne (Maple), Ms. Megee (Spruce)

Week Nine Elementary (Aug 14-18)

Stars and Constellations

with Mrs. Bree



Week Ten Early Childhood (Aug 21-25)

Stars

with Miss Cheyenne (Maple), Ms. Megee Spruce)

Week Ten Elementary (Aug 21-25)

Space Art

with Mrs. Purdue